

**2009 – 2010
Annual Report**

Message from the Principal

The 2009-2010 school year was a successful year in many ways. Students at St. Joseph Catholic School excelled in the areas of academics, fine arts, community participation and leadership. The successes of these achievements were represented in the Accountability Pillar Survey results and the Provincial Achievement Testing results.

I am pleased to report a high level of satisfaction from all St. Joseph Catholic School stakeholders. Parents, students and staff responded favourably in our Accountability Pillar Surveys and through ongoing dialogue throughout the school year. Therefore, St. Joseph Catholic School will maintain many of its existing practices and activities in the upcoming year. We look forward to continuing our AISI initiatives focusing on *Inquiry Based Learning* and meeting the needs of the *20th Century Learner*.

Our 2009-2010 school year theme was from the Gospel of John. "I am the Way, the Truth, and the Life" provided the basis for our school year planning and celebrations. Students and staff became closer to Christ through group celebrations, classroom study, family groupings, and prayer. We worked closely with our parish staff to promote and enhance our school year theme. As a vibrant Catholic community, we will continue to work together to meet the challenges of a rapidly growing city. Thank-you to our parents, students, staff and parish for your ongoing efforts to support Catholic Education in our community.

Sincerely,

Ray Renaud
Principal

October 2010 Accountability Pillar Overall Summary (OPTIONAL)

Goal	Measure Category	Measure Category Evaluation	Measure	St. Joseph School			Alberta			Measure Evaluation		
				Current Result	Prev Year Result	Prev 3 yr Average	Current Result	Prev Year Result	Prev 3 Yr Average	Achievement	Improvement	Overall
Goal 1: High-quality learning opportunities	Safe and Caring Schools	Excellent	Safe and Caring	90.2	90.0	90.5	87.6	86.9	85.4	Very High	Maintained	Excellent
	Student Learning Opportunities	n/a	Program of Studies	90.0	87.7	89.2	80.5	80.3	79.4	Very High	Maintained	Excellent
			Education Quality	95.9	95.5	96.0	89.2	89.3	88.4	Very High	Maintained	Excellent
			Drop Out Rate	n/a	n/a	n/a	4.3	4.8	4.8	n/a	n/a	n/a
			High School Completion Rate (3 yr)	n/a	n/a	n/a	71.5	70.8	70.9	n/a	n/a	n/a
Goal 2: Excellence in student learning outcomes	Student Learning Achievement (Grades K-9)	Excellent	PAT: Acceptable	93.2	91.0	92.6	79.1	78.3	77.2	Very High	Maintained	Excellent
	Student Learning Achievement (Grades 10-12)	n/a	PAT: Excellence	25.6	18.0	20.5	19.4	18.3	18.2	Very High	Maintained	Excellent
			Diploma: Acceptable	n/a	n/a	n/a	83.4	84.3	84.3	n/a	n/a	n/a
			Diploma: Excellence	n/a	n/a	n/a	19.0	18.5	19.2	n/a	n/a	n/a
			Diploma Exam Participation Rate (4+ Exams)	n/a	n/a	n/a	53.5	53.3	53.6	n/a	n/a	n/a
			Rutherford Scholarship Eligibility Rate (Revised)	n/a	n/a	n/a	56.9	57.3	56.7	n/a	n/a	n/a
	Preparation for Lifelong Learning, World of Work, Citizenship	n/a	Transition Rate (6 yr)	n/a	n/a	n/a	59.8	59.2	58.7	n/a	n/a	n/a
			Work Preparation	78.2	79.9	83.4	79.9	79.6	78.9	High	Maintained	Good
Citizenship			89.9	85.3	87.4	81.4	80.3	78.3	Very High	Maintained	Excellent	
Goal 4: Highly responsive and responsible education system	Parental Involvement	Excellent	Parental involvement	89.0	93.5	90.2	80.0	80.1	78.6	Very High	Maintained	Excellent
	Continuous Improvement	Good	School Improvement	86.0	90.3	92.1	79.9	79.4	77.6	Very High	Declined	Good

Notes:

1. PAT results are a weighted average of the percent meeting standards (Acceptable, Excellence) on Provincial Achievement Tests. The weights are the number of students enrolled in each course. Courses included: English Language Arts (Grades 3, 6, 9), Science (Grades 6, 9), French Language Arts (Grades 6, 9), Français (Grades 6, 9).
2. Diploma results are a weighted average of percent meeting standards (Acceptable, Excellence) on Diploma Examinations. The weights are the number of students writing the Diploma Examination for each course. Courses included: English Language Arts 30-1, English Language Arts 30-2, French Language Arts 30-1, Français 30-1, Pure Mathematics 30, Applied Mathematics 30, Biology 30, Science 30.
3. Overall evaluations can only be calculated if both improvement and achievement evaluations are available.
4. The subsequent pages include evaluations for each performance measure. If jurisdictions desire not to present this information for each performance measure in the subsequent pages, please include a reference to this overall summary page for each performance measure.
5. Data values have been suppressed where the number of students is less than 6. Suppression is marked with an asterisk (*).

Goal One: High Quality Learning Opportunities

Outcome: Schools environments are safe and caring.

Performance Measure	Results (in percentages)					Target ¹	Evaluation			Targets ²		
	2006	2007	2008	2009	2010	2010	Achievement	Improvement	Overall	2011	2012	2013
Percentage of teacher, parent and student agreement that: students are safe at school, are learning the importance of caring for others, are learning respect for others and are treated fairly in school.	88.8	90.2	91.3	90.0	90.2		Very High	Maintained	Excellent			

Comment on Results

The beginning of the 2009-2010 school year was set with the challenge of having a released convicted sex offender living within one block of our school. This situation was highly publicized in the local media causing great parental concern. The initial parent concern was very high however, when cooperation between RCMP and school authorities was demonstrated and parents were reassured of our “safe and caring” school procedures the initial parent concern became subdued.

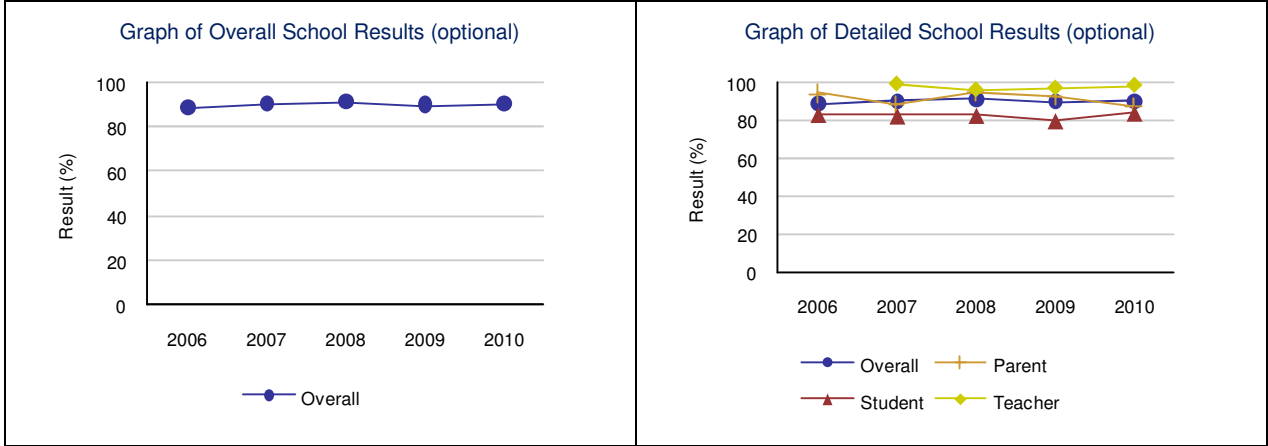
The spring survey results from school community stakeholders indicate a high degree of satisfaction (90.2%) that students are safe at St. Joseph Catholic School and that we are teaching students about mutual respect and concern for one another.

Strategies

We will continue to employ the following strategies to promote a safe and caring school environment.

- Promote the safety of students through building security. All outside doors will remain locked during the school day. All visitors to the school must report to the office and wear a visitor or volunteer badge.
- All school volunteers must present a criminal record check and attend a volunteer orientation session.
- Employing a full time counsellor to organize and facilitate student groups to foster mutual respect and friendship.
- Permeation and instruction of school year theme, “I am the Way, the Truth and the Life”. Monthly school celebrations and family grouping sessions promoted “Christ like” behaviour in the classroom, playground and in the community.

Measure Details (OPTIONAL)															
Percentage of teacher, parent and student agreement that: students are safe at school, are learning the importance of caring for others, are learning respect for others and are treated fairly in school.															
	School					Authority					Province				
	2006	2007	2008	2009	2010	2006	2007	2008	2009	2010	2006	2007	2008	2009	2010
Overall	88.8	90.2	91.3	90.0	90.2	87.6	85.6	88.2	87.5	90.5	84.4	84.2	85.1	86.9	87.6
Teacher	*	99.3	96.3	97.2	98.6	95.8	95.4	94.4	96.8	97.3	92.8	92.6	93.1	93.8	94.4
Parent	94.4	88.9	94.8	93.0	88.0	85.7	82.1	92.5	86.9	88.8	82.1	81.7	83.2	85.3	86.1
Student	83.3	82.5	82.8	80.0	83.9	81.3	79.2	77.7	78.9	85.5	78.4	78.5	79.1	81.7	82.2



Note: Data values have been suppressed where the number of respondents is less than 6. Suppression is marked with an asterisk (*).

Outcome: The education system meets the needs of all K–12 students and supports our society and the economy.

Performance Measure	Results (in percentages)					Target	Evaluation			Targets		
	2006	2007	2008	2009	2010	2010	Achievement	Improvement	Overall	2011	2012	2013
Percentage of teachers, parents and students satisfied with the opportunity for students to receive a broad program of studies including fine arts, career, technology, and health and physical education.	82.2	91.2	88.8	87.7	90.0		Very High	Maintained	Excellent			
Percentage of teachers, parents and students satisfied with the overall quality of basic education.	91.9	96.1	96.6	95.5	95.9		Very High	Maintained	Excellent			

Comment on Results

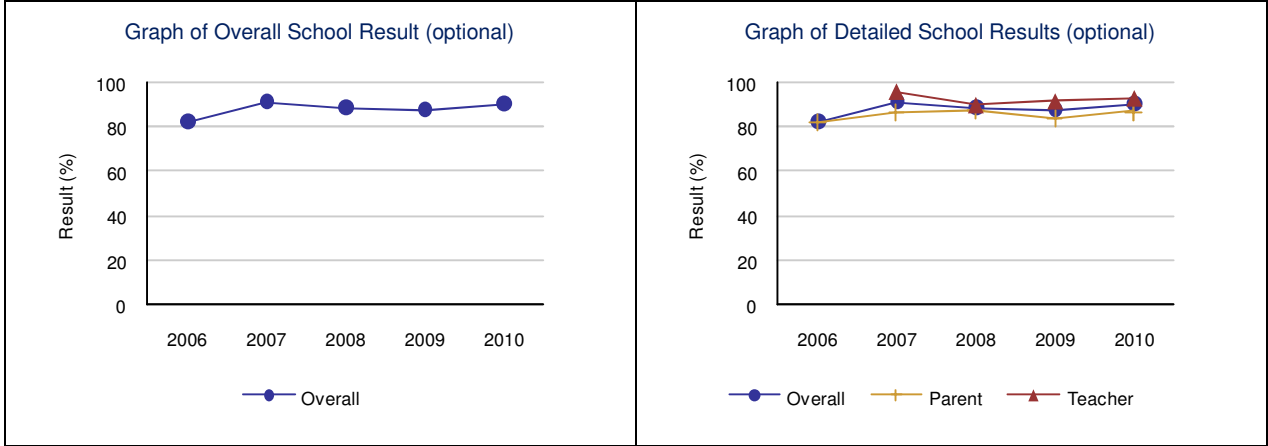
We are pleased that 95% of our school stakeholders are satisfied with the overall quality of basic education. Teachers continue to organize grade level planning meetings to discuss current educational issues and curriculum changes in education. Teachers also met through our AISI initiative to discuss Inquiry Based Learning/ Critical thinking strategies. These meetings foster collegiality and effective professional learning communities.

Strategies

We will continue to employ the following strategies to provide a variety of subject opportunities and to set the foundation for quality educational opportunities:

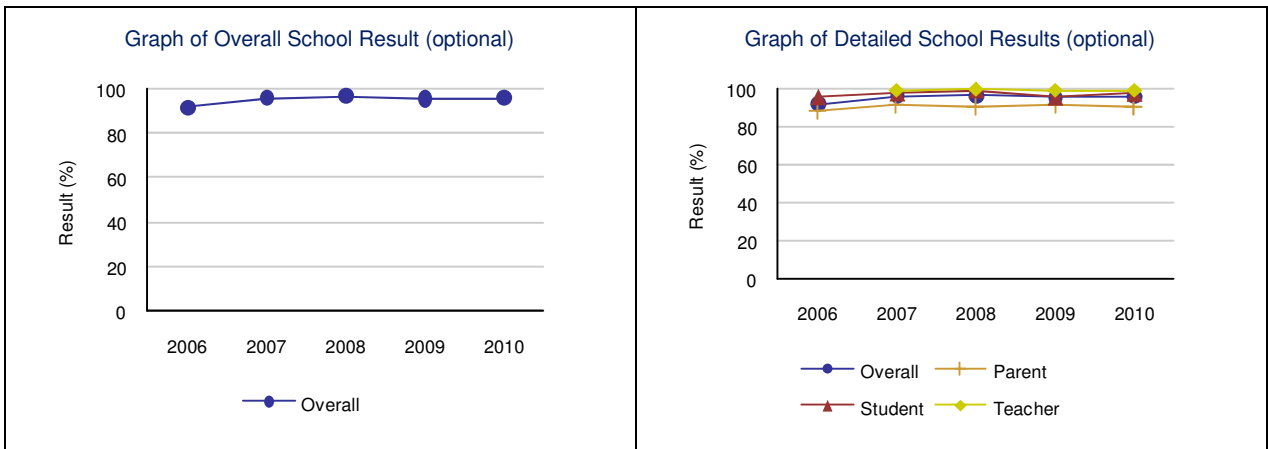
- Continue to offer daily physical education opportunities.
- Continue to offer high quality music programs instructed by music specialists.
- Continue to organize “KIDZ ART” Showcase to encourage and feature student artwork.
- Continue to host students’ concerts at each grade level to promote students performances in drama and musical production.
- Continue grade level meetings through our AISI project on Inquiry Based Learning.

Measure Details (OPTIONAL)															
Percentage of teachers, parents and students satisfied with the opportunity for students to receive a broad program of studies including fine arts, career, technology, and health and physical education.															
	School					Authority					Province				
	2006	2007	2008	2009	2010	2006	2007	2008	2009	2010	2006	2007	2008	2009	2010
Overall	82.2	91.2	88.8	87.7	90.0	82.1	84.0	83.6	84.8	88.7	78.1	78.5	79.4	80.3	80.5
Teacher	*	96.0	90.2	91.8	93.1	90.0	92.8	92.7	92.5	94.8	85.2	85.7	86.4	86.8	87.7
Parent	82.2	86.4	87.3	83.7	86.9	77.6	81.2	82.9	82.7	84.2	76.6	76.9	77.6	78.7	78.0
Student	n/a	n/a	n/a	n/a	n/a	78.9	78.0	75.3	79.2	87.1	72.6	72.9	74.1	75.3	75.9



Note: Data values have been suppressed where the number of respondents is less than 6. Suppression is marked with an asterisk (*).

Measure Details (OPTIONAL)															
Percentage of teachers, parents and students satisfied with the overall quality of basic education.															
	School					Authority					Province				
	2006	2007	2008	2009	2010	2006	2007	2008	2009	2010	2006	2007	2008	2009	2010
Overall	91.9	96.1	96.6	95.5	95.9	89.5	89.9	91.3	90.2	91.8	87.7	87.6	88.2	89.3	89.2
Teacher	*	99.4	100.0	99.4	99.4	96.6	97.1	97.8	98.3	98.3	94.8	94.7	94.9	95.3	95.6
Parent	88.1	91.0	90.3	91.3	90.7	84.4	84.6	90.3	85.8	87.6	81.6	81.8	83.0	84.4	83.9
Student	95.8	97.8	99.4	95.6	97.6	87.6	88.0	85.8	86.3	89.6	86.6	86.4	86.6	88.3	88.2



Note: Data values have been suppressed where the number of respondents is less than 6. Suppression is marked with an asterisk (*).

Goal Two: Excellence in Student Learning Outcomes

Outcome: Students demonstrate high standards in learner outcomes.

Performance Measure	Results (in percentages)					Target	Evaluation			Targets		
	2006	2007	2008	2009	2010	2010	Achievement	Improvement	Overall	2011	2012	2013
Overall percentage of students in Grades 3, 6 and 9 who achieved the acceptable standard on provincial achievement tests.	94.3	91.6	95.2	91.0	93.2		Very High	Maintained	Excellent			
Overall percentage of students in Grades 3, 6 and 9 who achieved the standard of excellence on provincial achievement tests.	20.7	20.6	22.9	18.0	25.6		Very High	Maintained	Excellent			
Overall percentage of students who achieved the acceptable standard on diploma examinations.							n/a	n/a	n/a			
Overall percentage of students who achieved the standard of excellence on diploma examinations.							n/a	n/a	n/a			

Performance Measure	Results (in percentages)					Target	Evaluation			Targets		
	2005	2006	2007	2008	2009	2010	Achievement	Improvement	Overall	2011	2012	2013
Percentage of students writing four or more diploma exams within three years of entering Grade 10.							n/a	n/a	n/a			
Percentage of Grade 12 students eligible for a Rutherford Scholarship.							n/a	n/a	n/a			

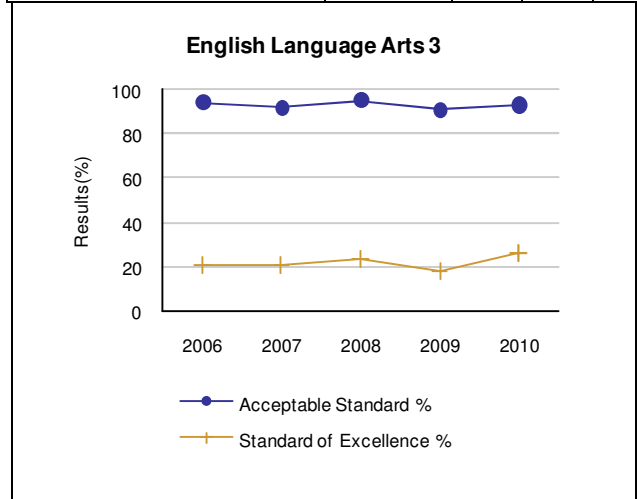
Comment on Results

St. Joseph Catholic School students write the grade three PAT in Language Arts and Math. We are pleased that our students continue to exceed provincial average in their achievement scores both in the acceptable standard and standard of excellence categories.

Strategies

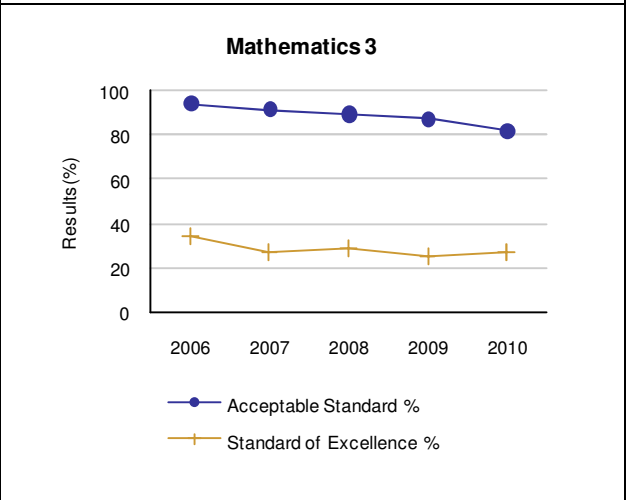
- Teachers will continue to meet in their grade level professional learning communities to review instructional strategies and best teaching practices.
- Teachers will be encouraged to mark PAT's during the summer as a professional development activity where they can view a wide variety of student responses as well as having the opportunity to network with other grade three teachers from around the province.
- Teachers will attend a wide variety of math PD opportunities and then return to school to share these sessions in a "train the trainer" model.
- Grade three teachers will attend a video conference session on provincial assessment for the revised grade three mathematics program.

Measure Details (OPTIONAL)													
PAT Course by Course Results by Number Enrolled.													
		Results (in percentages)										Target	
		2006		2007		2008		2009		2010		2010	
		A	E	A	E	A	E	A	E	A	E	A	E
English Language Arts 3	School	94.3	20.7	91.6	20.6	95.2	22.9	91.0	18.0	93.2	25.6		
	Authority	91.3	17.5	85.3	13.9	93.0	22.3	90.5	17.8	87.2	16.3		
	Province	81.3	14.1	80.3	17.7	80.1	16.1	81.3	18.2	81.6	19.5		
French Language Arts 3	School	n/a	n/a	n/a	n/a	n/a	n/a	n/a	n/a	n/a	n/a		
	Authority	n/a	n/a	n/a	n/a	n/a	n/a	n/a	n/a	n/a	n/a		
	Province	n/a	n/a	n/a	n/a	n/a	n/a	83.8	15.8	84.1	16.3		
Français 3	School	n/a	n/a	n/a	n/a	n/a	n/a	n/a	n/a	n/a	n/a		
	Authority	n/a	n/a	n/a	n/a	n/a	n/a	n/a	n/a	n/a	n/a		
	Province	n/a	n/a	n/a	n/a	n/a	n/a	82.5	16.3	86.4	16.3		
Mathematics 3	School	94.3	34.5	91.6	27.1	89.5	28.6	87.4	25.2	82.1	27.4		
	Authority	91.7	30.6	87.5	16.8	91.2	29.3	86.5	26.5	80.1	20.2		
	Province	82.0	26.9	79.9	23.5	78.7	23.9	79.7	26.8	76.4	24.8		



[No Data for French Language Arts 3]

[No Data for Français 3]



Note: Data values have been suppressed where the number of students is less than 6. Suppression is marked with an asterisk (*).

Performance Measure		Results (in percentages)					Target
		2006	2007	2008	2009	2010	2010
Participation rates in provincial achievement tests (PATs) for Grades 3, 6 and 9.							
English Language Arts 3	School	100.0	99.1	99.0	96.4	98.3	
	Authority	99.6	97.4	97.8	96.7	96.8	
	Province	90.6	90.1	89.8	90.6	91.1	
French Language Arts 3	School	n/a	n/a	n/a	n/a	n/a	
	Authority	n/a	n/a	n/a	n/a	n/a	
	Province	n/a	n/a	n/a	96.5	97.3	
Francais 3	School	n/a	n/a	n/a	n/a	n/a	
	Authority	n/a	n/a	n/a	n/a	n/a	
	Province	n/a	n/a	n/a	97.5	97.7	
Mathematics 3	School	100.0	99.1	99.0	96.4	98.3	
	Authority	99.6	97.8	98.2	96.7	96.9	
	Province	90.8	90.5	90.5	91.2	88.3	

Outcome: Students are well prepared for employment.

Performance Measure	Results (in percentages)					Target	Evaluation			Targets		
	2006	2007	2008	2009	2010	2010	Achievement	Improvement	Overall	2011	2012	2013
Percentages of teachers and parents who agree that students are taught attitudes and behaviours that will make them successful at work when they finish school.	83.3	78.6	91.9	79.9	78.2		High	Maintained	Good			

Comment on Results

St. Joseph Catholic School serves students in Kindergarten through grade four. This is a difficult question for students and parents to respond to as most of these children will not be entering the workforce for over ten years. However the St. Joseph School staff does an excellent job of teaching students the valuable skills and attitudes of cooperation, punctuality, critical thinking and mutual respect. Student growth in the areas over the next ten years should assist them in being successful citizens in the workplace.

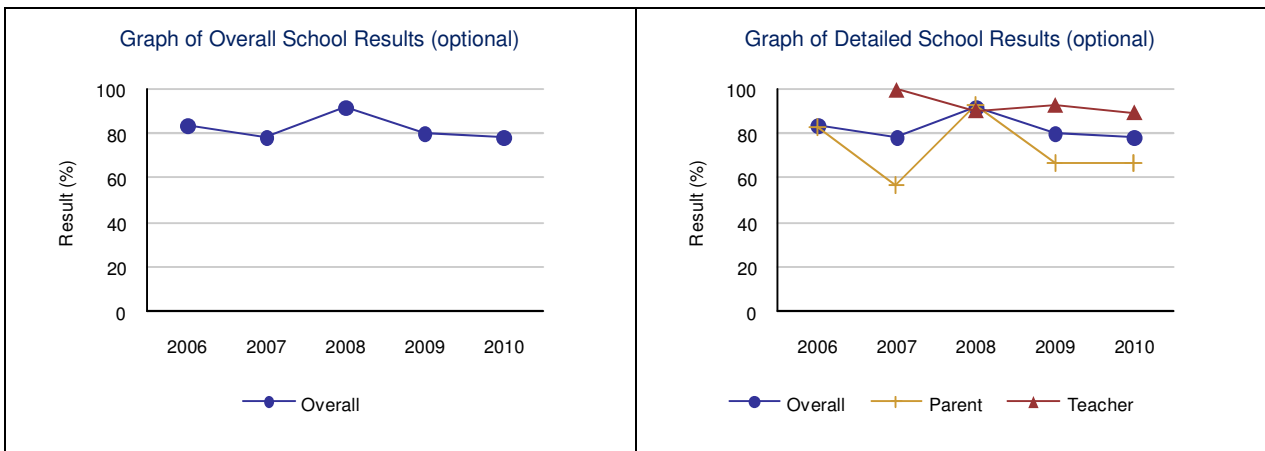
Strategies

- Continue to use our school year theme to promote desirable characteristics within our students through school wide celebrations, family grouping sessions and classroom instruction.
- Staff will continue to model Christian like behaviours to our students.
- Staff will continue to work on developing “21st Century” classrooms that promote critical thinking skills through Inquiry Based Learning.

Measure Details (OPTIONAL)

Percentages of teachers and parents who agree that students are taught attitudes and behaviours that will make them successful at work when they finish school.

	School					Authority					Province				
	2006	2007	2008	2009	2010	2006	2007	2008	2009	2010	2006	2007	2008	2009	2010
Overall	83.3	78.6	91.9	79.9	78.2	79.2	82.2	87.1	81.9	83.4	77.0	77.1	80.1	79.6	79.9
Teacher	*	100.0	90.6	93.1	89.7	90.0	95.0	91.7	94.5	95.1	89.4	89.2	89.3	88.9	90.0
Parent	83.3	57.1	93.1	66.7	66.7	68.4	69.4	82.6	69.3	71.7	64.6	65.1	70.9	70.2	69.8



Note: Data values have been suppressed where the number of respondents is less than 6. Suppression is marked with an asterisk (*).

Outcome: Students model the characteristics of active citizenship.

Performance Measure	Results (in percentages)					Target	Evaluation			Targets		
	2006	2007	2008	2009	2010	2010	Achievement	Improvement	Overall	2011	2012	2013
Percentages of teachers, parents and students who are satisfied that students model the characteristics of active citizenship.	81.9	85.5	91.3	85.3	89.9		Very High	Maintained	Excellent			

Comment on Results

We are very pleased with the high satisfaction rating in this category. Students at St. Joseph Catholic school are always encouraged to be active positive citizens in our school and community. St. Joseph Catholic School students and staff participate in a wide variety of charitable initiatives and social justice projects.

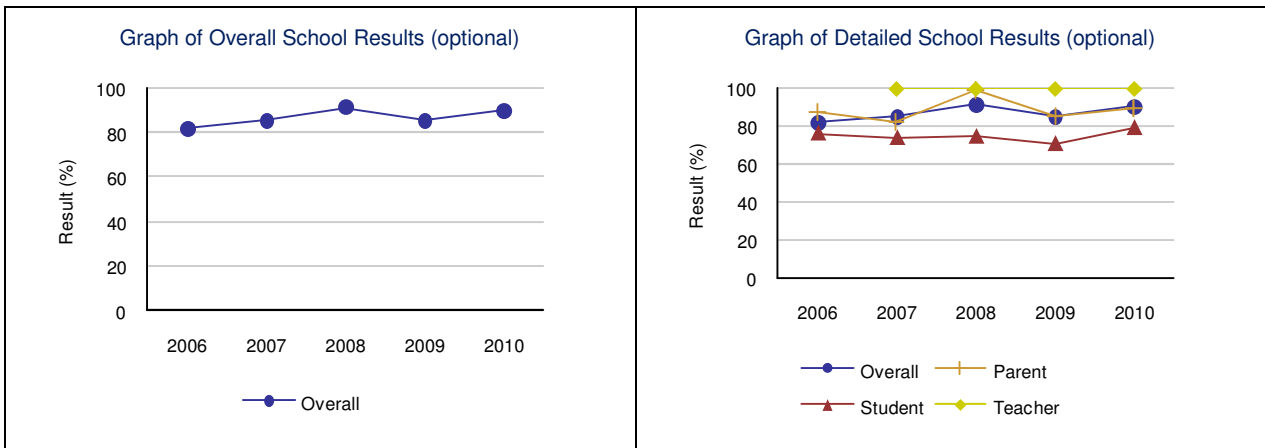
Strategies

- Continue to promote desirable citizenship characteristics through our school year theme.
- Continue to participate in charitable initiatives such as the Terry Fox Run, the Stollery Children’s Hospital Foundation and the “Valentine Hair Massacre”.
- Continue to involve students with Inquiry Based Learning social justice projects like “Project Ethiopia”.

Measure Details (OPTIONAL)

Percentages of teachers, parents and students who are satisfied that students model the characteristics of active citizenship.

	School					Authority					Province				
	2006	2007	2008	2009	2010	2006	2007	2008	2009	2010	2006	2007	2008	2009	2010
Overall	81.9	85.5	91.3	85.3	89.9	80.8	79.2	82.8	82.3	87.2	76.8	76.6	77.9	80.3	81.4
Teacher	*	100.0	100.0	100.0	100.0	94.8	95.3	95.9	96.6	99.0	90.3	89.9	90.6	91.8	93.0
Parent	87.3	82.5	99.4	85.2	90.3	76.8	73.9	86.0	79.3	83.0	72.4	72.6	74.7	77.4	78.5
Student	76.4	73.9	74.6	70.7	79.3	70.7	68.3	66.5	71.1	79.5	67.5	67.1	68.5	71.8	72.7



Note: Data values have been suppressed where the number of respondents is less than 6. Suppression is marked with an asterisk (*).

Also report targets and results for all local school/authority measures related to Goal 2 (minimum one year of results – authorities are encouraged to provide multi-year results for trend analysis).

Goal Four: Highly Responsive and Responsible Jurisdiction

Outcome: The jurisdiction demonstrates effective working relationships.

Performance Measure	Results (in percentages)					Target	Evaluation			Targets		
	2006	2007	2008	2009	2010	2010	Achievement	Improvement	Overall	2011	2012	2013
Percentage of teachers and parents satisfied with parental involvement in decisions about their child's education.	86.2	87.2	90.0	93.5	89.0		Very High	Maintained	Excellent			

Comment on Results

The staff at St. Joseph Catholic School endeavor to make our parents feel very welcome in the school. We encourage open dialogue to serve the best interests of our students. The staff are pleased that 89% of stakeholders are satisfied with parental involvement with their child's education.

Strategies

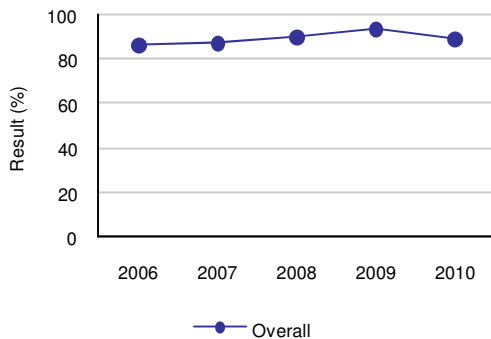
- Continue to organize a "meet the staff" BBQ at the beginning of the year when teachers meet their parents as well as having a 20 minute classroom session to introduce them to parents.
- Continue to work cooperatively with school council executive members to organize regular meetings to facilitate positive communication between home and school.
- Continue to schedule four formal evenings of parent-teacher conferences to discuss student's learning.
- Continue to foster an "open door" policy with parents where they are encouraged to contact school administrators if they have concerns or issues to discuss.

Measure Details (OPTIONAL)

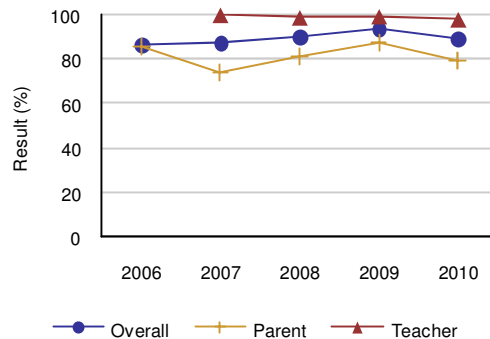
Percentage of teachers and parents satisfied with parental involvement in decisions about their child's education.

	School					Authority					Province				
	2006	2007	2008	2009	2010	2006	2007	2008	2009	2010	2006	2007	2008	2009	2010
Overall	86.2	87.2	90.0	93.5	89.0	79.6	81.4	85.7	81.4	84.0	77.9	77.5	78.2	80.1	80.0
Teacher	*	100.0	98.8	99.3	97.9	91.0	92.1	92.6	90.3	93.0	87.6	87.1	87.5	88.0	88.6
Parent	86.2	74.3	81.2	87.8	80.0	68.2	70.6	78.9	72.4	75.1	68.1	67.9	69.0	72.2	71.3

Graph of Overall School Results (optional)



Graph of Detailed School Results (optional)



Note: Data values have been suppressed where the number of respondents is less than 6. Suppression is marked with an asterisk (*).

Outcome: The jurisdiction demonstrates leadership, innovation and continuous improvement.

Performance Measure	Results (in percentages)					Target	Evaluation			Targets		
	2006	2007	2008	2009	2010	2010	Achievement	Improvement	Overall	2011	2012	2013
Percentages of teachers, parents and students indicating that their school and schools in their jurisdiction have improved or stayed the same the last three years.	90.4	93.5	92.7	90.3	86.0		Very High	Declined	Good			

Comment on Results

The above performance measure was the only one in the Accountability Pillar for 2009-2010 that showed an area of decline. Upon further review, both the student and teacher responses had increased in satisfaction from the previous year. The parent response did drop from the previous year to a rating of 68%. Although there were no written comments to support this lower satisfaction rating, we can infer that it is related to an unusually high staff absentee rate in our grade four classrooms due to medical leave. Twenty-five out of 110 grade four parents responded to the survey and the administrative team at St. Joseph Catholic school were made aware by grade four parents during the school year that this was a major concern for them. We are confident that the parent satisfaction rate will increase in the next school year.

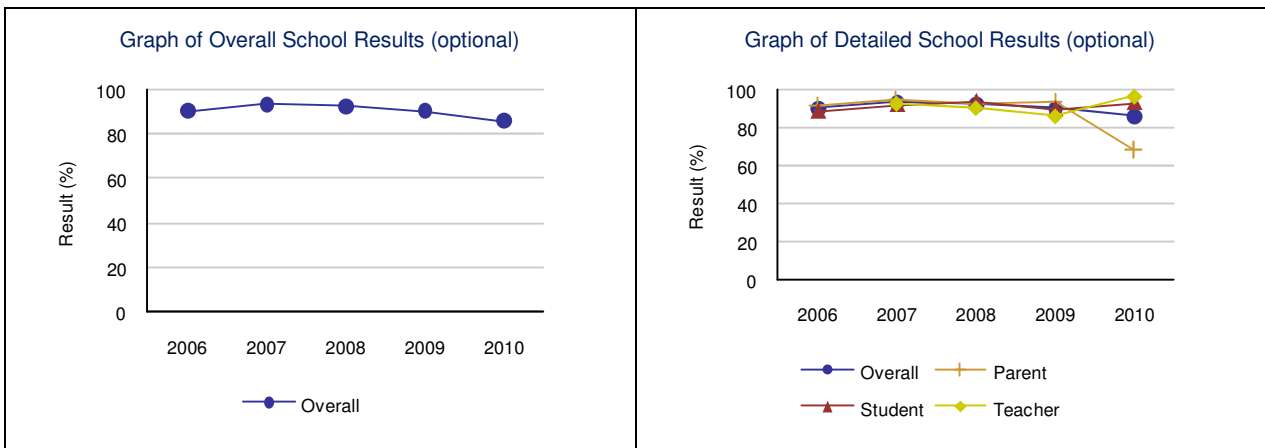
Strategies

- Promote our school year theme in our newsletter, our website and within our school.
- Educate parents about our AISI initiative to enhance student achievement through further implementation of Inquiry Based Learning and critical thinking instructional practices.
- Continue to promote ongoing staff professional development through the erlc, AISI grade level workshops and teacher specialist councils.

Measure Details (OPTIONAL)

Percentages of teachers, parents and students indicating that their school and schools in their jurisdiction have improved or stayed the same the last three years.

	School					Authority					Province				
	2006	2007	2008	2009	2010	2006	2007	2008	2009	2010	2006	2007	2008	2009	2010
Overall	90.4	93.5	92.7	90.3	86.0	75.9	81.3	84.4	81.4	84.9	76.8	76.3	77.0	79.4	79.9
Teacher	*	92.9	90.6	86.2	96.6	68.8	84.9	85.7	81.7	89.4	75.5	74.5	75.6	78.2	80.8
Parent	92.0	95.2	93.3	94.4	68.0	80.2	81.2	87.1	81.8	82.2	75.4	75.1	75.9	78.1	77.0
Student	88.9	92.3	94.0	90.1	93.3	78.7	77.7	80.5	80.8	83.1	79.4	79.3	79.5	81.8	81.8



Note: Data values have been suppressed where the number of respondents is less than 6. Suppression is marked with an asterisk (*).