

2008 – 2009
Annual Report

Message from the Principal

The 2008-2009 school year was a successful year in many ways. Students at St. Joseph Catholic School excelled in the areas of academics, fine arts, community participation and leadership. The success of these achievements was represented in the annual survey results.

After reviewing Alberta Education's Accountability Pillar Survey results, the Evergreen CSRD NO.2 Schollie Survey results and the Provincial Achievement Testing results, I am pleased to report a high level of satisfaction from all St. Joseph Catholic School stakeholders. Parents, students and staff responded favourably in these surveys. Therefore, St. Joseph Catholic School will maintain many of its existing practices and activities in the upcoming year. In addition, we look forward to beginning some new initiatives at our school. These will include the beginning of a new AISI Cycle focusing on *Inquiry Based Learning* and meeting the needs of the *20th Century Learner*. As a vibrant Catholic community, we will continue to work together to meet the challenges of a rapidly growing city. Thank-you to our parents, students, staff and parish for your ongoing efforts to support Catholic Education in our community.

Sincerely,

Ray Renaud
Principal

October 2009 Accountability Pillar Overall Summary (OPTIONAL)

Goal	Measure Category	Measure Category Evaluation	Measure	St. Joseph School			Alberta			Measure Evaluation		
				Current Result	Prev Year Result	Prev 3 yr Average	Current Result	Prev Year Result	Prev 3 Yr Average	Achievement	Improvement	Overall
Goal 1: High Quality Learning Opportunities for All	Safe and Caring Schools	Excellent	Safe and Caring	90.0	91.3	90.1	86.9	85.1	84.6	Very High	Maintained	Excellent
	Student Learning Opportunities	n/a	Program of Studies	87.7	88.8	87.4	80.3	79.4	78.7	Very High	Maintained	Excellent
			Education Quality	95.5	96.6	94.9	89.3	88.2	87.8	Very High	Maintained	Excellent
			Drop Out Rate	n/a	n/a	n/a	4.8	5.0	4.9	n/a	n/a	n/a
			High School Completion Rate (3 yr)	n/a	n/a	n/a	70.7	71.0	70.6	n/a	n/a	n/a
Goal 2: Excellence in Learner Outcomes	Student Learning Achievement (Grades K-9)	Excellent	PAT: Acceptable	89.2	92.4	92.7	76.8	75.3	75.6	Very High	Maintained	Excellent
			PAT: Excellence	21.6	25.7	25.7	19.2	18.3	18.3	High	Maintained	Good
	Student Learning Achievement (Grades 10-12)	n/a	Diploma: Acceptable	n/a	n/a	n/a	84.4	84.4	84.5	n/a	n/a	n/a
			Diploma: Excellence	n/a	n/a	n/a	19.1	19.4	20.3	n/a	n/a	n/a
			Diploma Exam Participation Rate (4+ Exams)	n/a	n/a	n/a	53.3	53.6	53.6	n/a	n/a	n/a
			Rutherford Scholarship Eligibility Rate (Revised)	n/a	n/a	n/a	57.3	56.8	55.8	n/a	n/a	n/a
	Preparation for Lifelong Learning, World of Work, Citizenship	n/a	Transition Rate (6 yr)	n/a	n/a	n/a	60.7	60.3	59.1	n/a	n/a	n/a
			Work Preparation	79.9	91.9	84.6	79.6	80.1	78.1	High	Maintained	Good
Citizenship			85.3	91.3	86.2	80.3	77.9	77.1	Very High	Maintained	Excellent	
Goal 4: Highly Responsive and Responsible Jurisdiction (Ministry)	Parental Involvement	Excellent	Parental Involvement	93.5	90.0	87.8	80.1	78.2	77.9	Very High	Maintained	Excellent
	Continuous Improvement	Excellent	School Improvement	90.3	92.7	92.2	79.4	77.0	76.7	Very High	Maintained	Excellent

Notes:

- 1) Student Learning Achievement: PAT Values reported are weighted averages of PAT Acceptable and PAT Excellence results. Courses included: ELA (Grades 3, 6, 9), Math (Grades 3, 6, 9), Science (Grades 6, 9), French Language Arts (Grades 6, 9), Français (Grades 6, 9).
- 2) Student Learning Achievement: Diploma Exam Values reported are averages of Diploma Acceptable and Diploma Excellence results, weighted by the number of students enrolled in each course.
- 3) Overall evaluations can only be calculated if both improvement and achievement evaluations are available.
- 4) Data values have been suppressed where the number of students is less than 6. Suppression is marked with an asterisk (*).

Goal One: High Quality Learning Opportunities for All

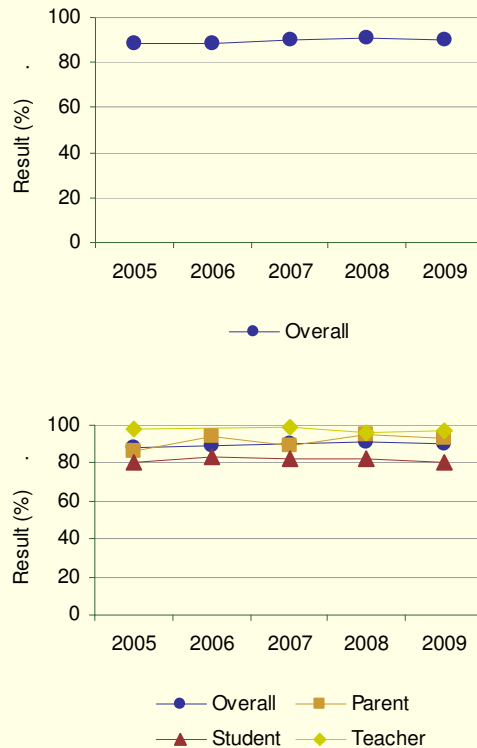
Outcome: Schools provide a safe and caring environment.

Performance Measure		Results (in percentages)					Target**	
		2005	2006	2007	2008	2009	2009	
Percentage of teacher, parent and student agreement that: students are safe at school, are learning the importance of caring for others, are learning respect for others and are treated fairly in school.	Overall (required)	School	88.3	88.8	90.2	91.3	90.0	if set
		Authority	85.3	87.6	85.6	88.2	87.5	
		Province	83.1	84.4	84.2	85.1	86.9	
	Teacher (optional)	School	97.9	*	99.3	96.3	97.2	
		Authority	95.3	95.8	95.4	94.4	96.8	
		Province	92.3	92.8	92.6	93.1	93.8	
	Parent (optional)	School	86.6	94.4	88.9	94.8	93.0	
		Authority	83.5	85.7	82.1	92.5	86.9	
		Province	79.9	82.1	81.7	83.2	85.3	
	Student (optional)	School	80.6	83.3	82.5	82.8	80.0	
		Authority	77.0	81.3	79.2	77.7	78.9	
		Province	77.2	78.4	78.5	79.1	81.7	

Comment on Results

St. Joseph Catholic School continues to have a high satisfaction rate expressed by all stakeholders when responding to the question of “safe and caring” schools. The staff of St. Joseph School continues to strive to promote a feeling of family and community within the school. School initiatives including monthly celebrations and family groupings help to support the goal of providing an atmosphere of a safe and caring school. The annual *Schollie Survey* reaffirms the *APAR Results* by reporting that 96% of parents believe that there is a caring atmosphere in the school. In addition, 93% of the students surveyed reported that they feel welcome at school. St. Joseph School staff will continue school initiatives in the 2009-2010 school year to ensure that this high satisfaction rate from both students and parents continues.

Graph of Overall School Results (optional)



Note: Data values have been suppressed where the number of respondents is less than 6. Suppression is marked with an asterisk (*).

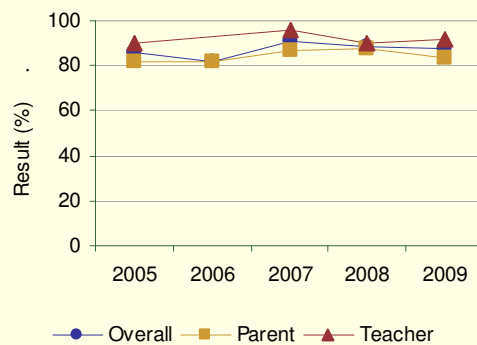
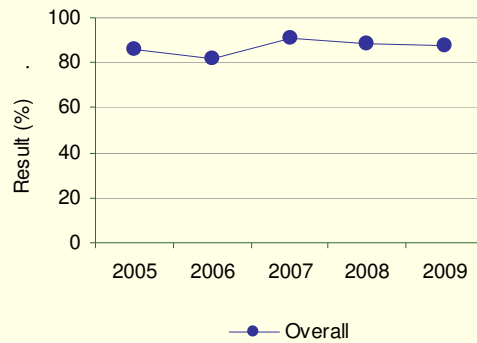
Outcome: The education system meets the needs of all K–12 students, society and the economy.

Performance Measure			Results (in percentages)					Target
			2005	2006	2007	2008	2009	2009
Percentage of teachers, parents and students satisfied with the opportunity for students to receive a broad program of studies including fine arts, career, technology, and health and physical education.	Overall (required)	School	86.0	82.2	91.2	88.8	87.7	if set
		Authority	78.3	82.1	84.0	83.6	84.8	
		Province	76.7	78.1	78.5	79.4	80.3	
	Teacher (optional)	School	90.2	*	96.0	90.2	91.8	
		Authority	87.9	90.0	92.8	92.7	92.5	
		Province	83.6	85.2	85.7	86.4	86.8	
	Parent (optional)	School	81.9	82.2	86.4	87.3	83.7	
		Authority	77.3	77.6	81.2	82.9	82.7	
		Province	75.0	76.6	76.9	77.6	78.7	
	Student (optional)	Authority	69.6	78.9	78.0	75.3	79.2	
		Province	71.5	72.6	72.9	74.1	75.3	

Comment on Results

The APAR and Schollie survey indicate a high degree of satisfaction from the parent community with St. Joseph School efforts to provide a wide range of learning opportunities for our students. Daily physical activities, art instruction and a highly specialized music department provide a variety of learning experiences for the students. Schollie Survey results indicated that 91% of the parent community was satisfied with the choice of programs available in the school system.

Graph of Overall School Results (optional)



Note: Data values have been suppressed where the number of respondents is less than 6. Suppression is marked with an asterisk (*).

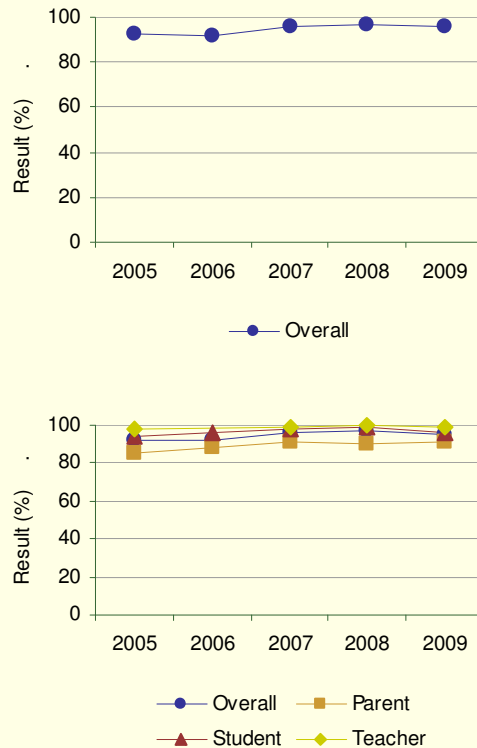
Outcome: The education system meets the needs of all K–12 students, society and the economy. (continued)

Performance Measure			Results (in percentages)					Target
			2005	2006	2007	2008	2009	2009
Percentage of teachers, parents and students satisfied with the overall quality of basic education.	Overall (required)	School	92.4	91.9	96.1	96.6	95.5	if set
		Authority	87.1	89.5	89.9	91.3	90.2	
		Province	86.1	87.7	87.6	88.2	89.3	
	Teacher (optional)	School	98.2	*	99.4	100.0	99.4	
		Authority	95.9	96.6	97.1	97.8	98.3	
		Province	93.9	94.8	94.7	94.9	95.3	
	Parent (optional)	School	84.9	88.1	91.0	90.3	91.3	
		Authority	82.2	84.4	84.6	90.3	85.8	
		Province	78.9	81.6	81.8	83.0	84.4	
	Student (optional)	School	94.1	95.8	97.8	99.4	95.6	
		Authority	83.1	87.6	88.0	85.8	86.3	
		Province	85.6	86.6	86.4	86.6	88.3	

Comment on Results

APAR survey results show that 95.5% of our school community stakeholders are satisfied with the overall quality of basic education. This result is mirrored with the Schollie Survey result that showed 96% of the parent community was satisfied with the overall quality of education that their children receive. St. Joseph School staff will continue to research best educational practices and share their learning through grade level meetings every six weeks. The 2009-2010 school year will be the beginning of a new AISI cycle which will be focusing on “Inquiry Based Learning” and engaging the 21st century learner.

Graph of Overall School Results (optional)



Note: Data values have been suppressed where the number of respondents is less than 6. Suppression is marked with an asterisk (*).

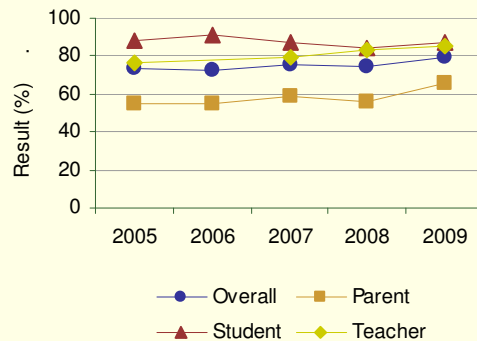
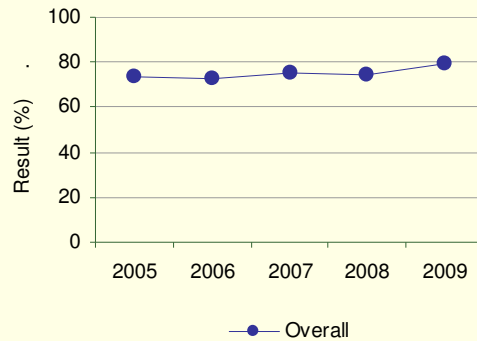
Outcome: The education system meets the needs of all K–12 students, society and the economy.

Performance Measure		Results (in percentages)					Target	
		2005	2006	2007	2008	2009	2009	
Percentage of teacher, parent and student satisfaction with the accessibility, effectiveness and efficiency of programs and services for students in their community.	Overall (required)	School	73.3	72.9	75.4	74.5	79.5	if set
		Authority	71.0	71.8	73.0	72.8	74.7	
		Province	67.2	68.5	68.2	69.2	70.3	
	Teacher (optional)	School	76.8	*	79.6	83.2	85.5	
		Authority	78.3	78.5	79.9	82.5	86.7	
		Province	70.0	71.5	72.0	73.4	74.5	
	Parent (optional)	School	55.0	54.8	58.9	55.8	65.8	
		Authority	58.1	57.6	61.9	60.8	61.6	
		Province	54.9	56.9	55.9	56.5	58.1	
	Student (optional)	School	88.2	91.0	87.6	84.5	87.3	
		Authority	76.6	79.3	77.3	75.0	75.8	
		Province	76.7	77.1	76.8	77.7	78.4	

Comment on Results

The 2008-2009 was another challenging year for St. Joseph School in terms of obtaining Speech and Occupational Therapy services through the Health Authority. In order to provide for student needs in this area, the school is forced to hire private service providers for our students which put a greater strain on our school budget. Despite this school budgeting challenge, 79.5% of our school stakeholders are satisfied with their accessibility to community services.

Graph of Overall School Results (optional)



Note: Data values have been suppressed where the number of respondents is less than 6. Suppression is marked with an asterisk (*).

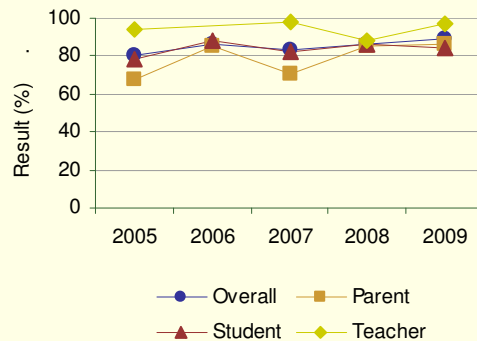
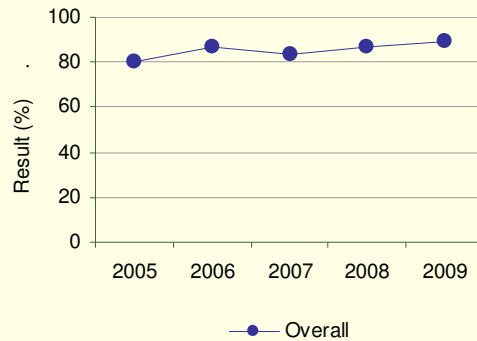
Outcome: Children and youth at risk have their needs addressed through effective programs and supports.

Performance Measure			Results (in percentages)					Target
			2005	2006	2007	2008	2009	2009
Percentage of teacher, parent and student agreement that programs for children at risk are easy to access and timely.	Overall (required)	School	80.2	86.6	83.4	86.5	89.0	if set
		Authority	80.3	83.1	81.2	84.9	83.5	
		Province	76.9	78.6	78.3	79.5	81.4	
	Teacher (optional)	School	94.0	*	97.6	88.5	96.6	
		Authority	94.6	94.6	94.4	94.9	96.0	
		Province	90.6	91.6	91.2	91.9	92.5	
	Parent (optional)	School	67.8	85.3	70.3	84.9	86.3	
		Authority	70.4	72.2	69.7	81.4	74.7	
		Province	63.8	67.0	66.8	68.5	71.3	
	Student (optional)	School	78.7	88.0	82.4	86.1	84.2	
		Authority	75.8	82.5	79.7	78.3	79.8	
		Province	76.1	77.1	77.0	78.0	80.3	

Comment on results

The St. Joseph School special education department, school counselor and school administration work collaboratively with parents to meet the wide range of needs of our students. We hope that this successful team approach will continue to support our students and consequently ensure that no student “falls through the cracks”.

Graph of Overall School Results (optional)



Note: Data values have been suppressed where the number of respondents is less than 6. Suppression is marked with an asterisk (*).

Goal Two: Excellence in Student Learning Outcomes

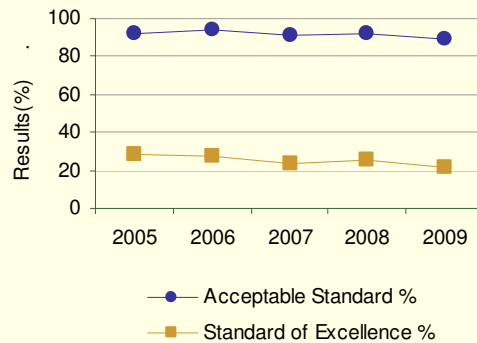
Outcome: Students demonstrate high standards in learner outcomes.

Performance Measure		Results (in percentages)**										Target		
PAT Results by Number Enrolled - percentages of students who achieve the acceptable standard and the percentages who achieve the standard of excellence on Grades 3, 6 and 9 Provincial Achievement Tests (cohort results).		2005		2006		2007		2008		2009		2009		
		A	E	A	E	A	E	A	E	A	E	A	E	
Grade 3	English Language Arts 3	School	94.0	27.4	94.3	20.7	91.6	20.6	95.2	22.9	91.0	18.0	if set	if set
		Authority	92.9	26.3	91.3	17.5	85.3	13.9	93.0	22.3	90.5	17.8		
		Province	82.2	16.2	81.3	14.1	80.3	17.7	80.1	16.1	81.3	18.2		
	Mathematics 3	School	90.5	29.8	94.3	34.5	91.6	27.1	89.5	28.6	87.4	25.2	if set	if set
		Authority	88.9	23.7	91.7	30.6	87.5	16.8	91.2	29.3	86.5	26.5		
		Province	80.3	26.1	82.0	26.9	79.9	23.5	78.7	23.9	79.7	26.8		

Comment on Results

St. Joseph Catholic School has an impressive 5 yr history of Provincial Achievement Testing results. Last year, 91% of students achieved the acceptable standard on the Language Arts PAT which was 10% above the provincial average. 87.4% of students achieved the acceptable standard on the Math PAT which was 7.5% above the provincial average. Despite these excellent results, it did represent a slight decrease from the past three year average in Math. The past year did see the introduction of three new teachers to the grade three team at St. Joseph School. The three new teachers were welcome additions to the school but it does take more than one year to master a grade level curriculum. The grade level team has analyzed the PAT school reports and in addition two of the new teachers participated in the provincial exam marking session at Alberta Education. Both of these initiatives are excellent professional development practices.

Graph of Overall School Results (optional)



Outcome: Students demonstrate high standards in learner outcomes. (continued)

Performance Measure			Results (in percentages)					Target
			2005	2006	2007	2008	2009	2009
Participation rates in provincial achievement tests(PATs) for Grades 3, 6 and 9.								
Grade 3	English Language Arts 3	School	100.0	100.0	99.1	99.0	96.4	if set
		Authority	99.5	99.6	97.4	97.8	96.7	
		Province	90.2	90.6	90.1	89.8	90.6	
	Mathematics 3	School	100.0	100.0	99.1	99.0	96.4	if set
		Authority	99.5	99.6	97.8	98.2	96.7	
		Province	90.8	90.8	90.5	90.5	91.2	

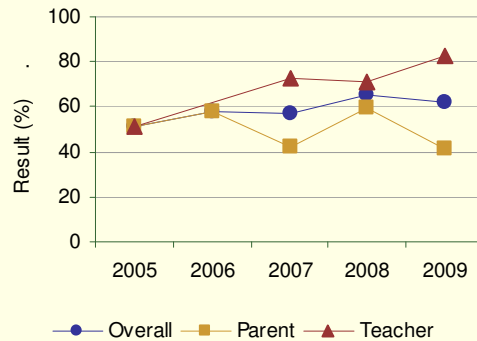
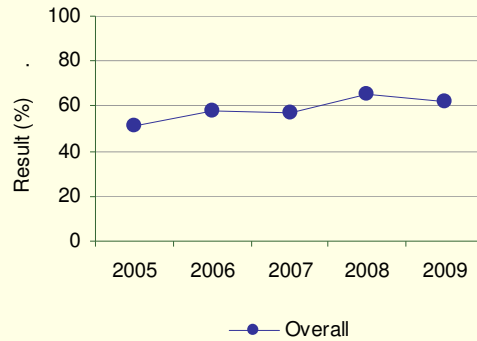
Outcome: Students are well prepared for lifelong learning. (continued)

Performance Measure		Results (in percentages)					Target	
		2005	2006	2007	2008	2009	2009	
Percentage of teacher and parent satisfaction that high school graduates demonstrate the knowledge, skills and attitudes necessary for lifelong learning.	Overall (required)	School	50.9	58.0	57.3	65.5	61.8	if set
		Authority	61.8	70.3	65.5	72.4	71.2	
		Province	64.4	66.1	65.6	66.7	67.4	
	Teacher (optional)	School	50.9	*	72.7	71.4	82.5	
		Authority	70.4	81.2	71.9	78.8	83.0	
		Province	73.7	74.2	74.1	73.8	74.0	
	Parent (optional)	School	51.0	58.0	41.9	59.6	41.2	
		Authority	53.3	59.4	59.2	66.1	59.3	
		Province	55.1	57.9	57.1	59.5	60.8	

Comment on Results

St. Joseph Catholic School serves students from kindergarten through grade four. Most of our parents do not have children in the high school setting which makes it difficult for them to answer this question with an informed opinion. The *Schollie Survey* had dramatically different results than the APAR where 95% of parents indicated that they were satisfied that their child is learning the skills he/she will need when he/she leaves school.

Graph of Overall School Results (optional)



Note: Data values have been suppressed where the number of respondents is less than 6. Suppression is marked with an asterisk (*).

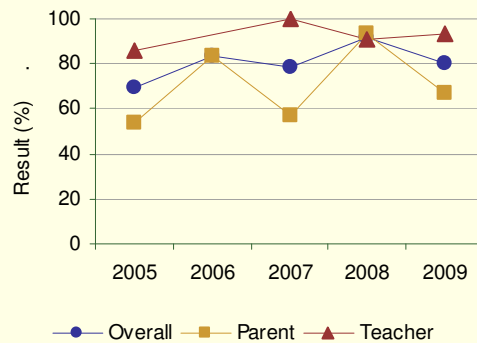
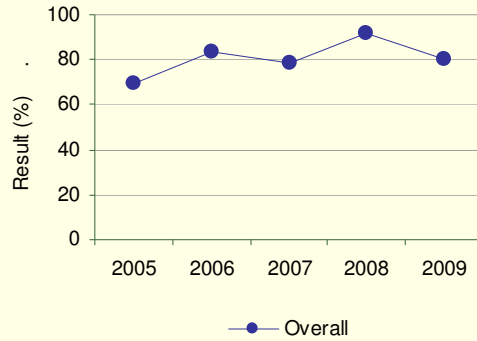
Outcome: Students are well prepared for employment.

Performance Measure		Results (in percentages)					Target	
		2005	2006	2007	2008	2009	2009	
Percentages of teachers and parents who agree that students are taught attitudes and behaviors that will make them successful at work when they finish school.	Overall (required)	School	69.6	83.3	78.6	91.9	79.9	if set
		Authority	74.5	79.2	82.2	87.1	81.9	
		Province	74.9	77.0	77.1	80.1	79.6	
	Teacher (optional)	School	85.7	*	100.0	90.6	93.1	
		Authority	91.2	90.0	95.0	91.7	94.5	
		Province	89.1	89.4	89.2	89.3	88.9	
	Parent (optional)	School	53.6	83.3	57.1	93.1	66.7	
		Authority	57.8	68.4	69.4	82.6	69.3	
		Province	60.8	64.6	65.1	70.9	70.2	

Comment on Results

St. Joseph Catholic School serves students in kindergarten through grade four. This is a difficult question for parents to respond to as many of their children may be 11 or more years away from finishing high school. However in the annual *Schollie Survey*, 95% of parents did indicate that they were satisfied their children were learning the skills necessary to be successful when they leave school.

Graph of Overall School Results (optional)



Note: Data values have been suppressed where the number of respondents is less than 6. Suppression is marked with an asterisk (*).

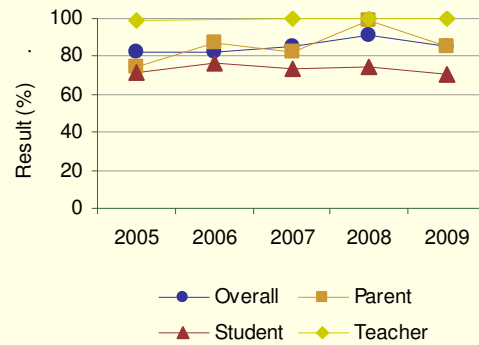
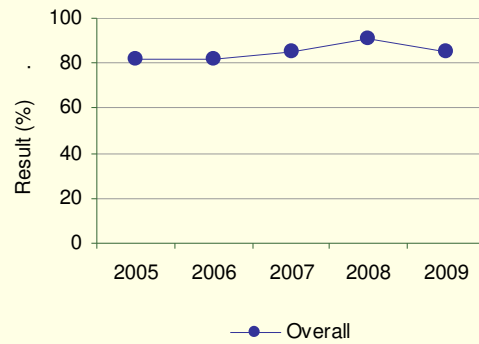
Outcome: Students model the characteristics of active citizenship.

Performance Measure		Results (in percentages)					Target	
		2005	2006	2007	2008	2009	2009	
Percentages of teachers, parents and students who are satisfied that students model the characteristics of active citizenship.	Overall (required)	School	81.9	81.9	85.5	91.3	85.3	if set
		Authority	78.6	80.8	79.2	82.8	82.3	
		Province	75.3	76.8	76.6	77.9	80.3	
	Teacher (optional)	School	99.3	*	100.0	100.0	100.0	
		Authority	95.3	94.8	95.3	95.9	96.6	
		Province	89.5	90.3	89.9	90.6	91.8	
	Parent (optional)	School	74.7	87.3	82.5	99.4	85.2	
		Authority	73.6	76.8	73.9	86.0	79.3	
		Province	70.3	72.4	72.6	74.7	77.4	
	Student (optional)	School	71.6	76.4	73.9	74.6	70.7	
		Authority	66.9	70.7	68.3	66.5	71.1	
		Province	66.1	67.5	67.1	68.5	71.8	

Comment on Results

Our St. Joseph School community takes great pride in the efforts of our students to be active citizens. A wide variety of social justice projects are organized each year to help the students learn the value of responsible citizenship. These activities include: Terry Fox Run, Coats for Kids Campaign, Support of the Canadian Food Grains Bank, Save a family Plan, The Holy Childhood Association and others. In addition the St. Joseph Students took part in a yearlong initiative entitled *Caring for God's Creation* which focused students efforts and learning on environmental issues. In the annual *Schollie Survey*, 97% of parents were satisfied with our school efforts to do all things like Jesus would want them done.

Graph of Overall School Results (optional)



Note: Data values have been suppressed where the number of respondents is less than 6. Suppression is marked with an asterisk (*).

Goal Three: Highly Responsive and Responsible Jurisdiction

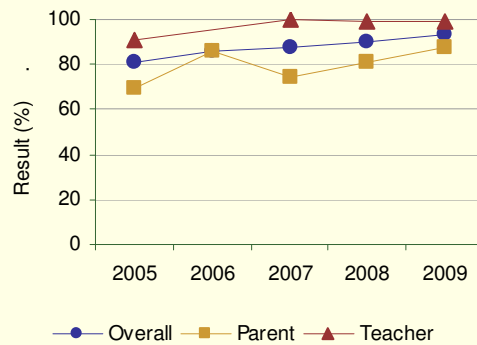
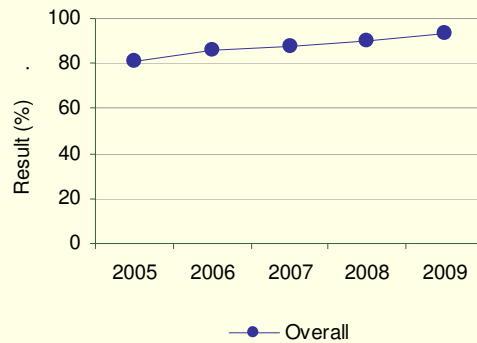
Outcome: The authority demonstrates effective working relationships.

Performance Measure		Results (in percentages)					Target	
		2005	2006	2007	2008	2009	2009	
Percentage of teachers and parents satisfied with parental involvement in decisions about their child's education.	Overall (required)	School	80.6	86.2	87.2	90.0	93.5	if set
		Authority	78.0	79.6	81.4	85.7	81.4	
		Province	76.1	77.9	77.5	78.2	80.1	
	Teacher (optional)	School	91.3	*	100.0	98.8	99.3	
		Authority	88.2	91.0	92.1	92.6	90.3	
		Province	87.0	87.6	87.1	87.5	88.0	
	Parent (optional)	School	69.8	86.2	74.3	81.2	87.8	
		Authority	67.8	68.2	70.6	78.9	72.4	
		Province	65.2	68.1	67.9	69.0	72.2	

Comment on Results

St. Joseph School has an established reputation for a high level of parent involvement in school activities. Parents feel welcome in the school and are engaged in their children's education. The annual *Schollie Survey* reported that 97% of parents feel welcome in the school. In addition, 96% of parents are satisfied with the opportunity they have to be involved in school activities.

Graph of Overall School Results (optional)



Note: Data values have been suppressed where the number of respondents is less than 6. Suppression is marked with an asterisk (*).

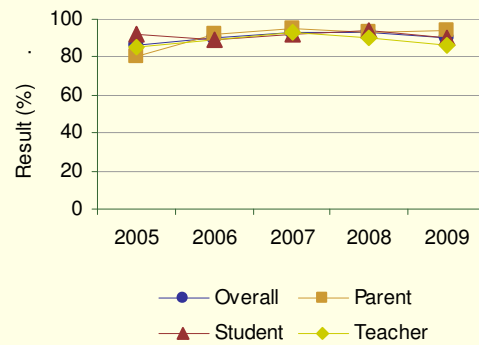
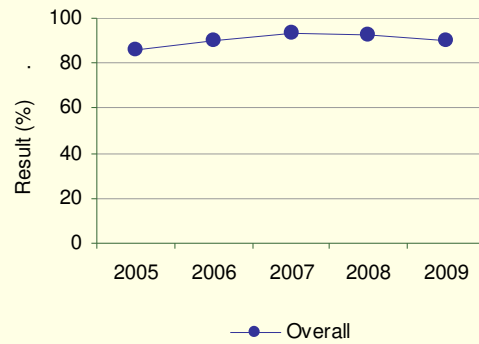
Outcome: The authority demonstrates leadership and continuous improvement.

Performance Measure		Results (in percentages)					Target	
		2005	2006	2007	2008	2009	2009	
Percentages of teachers, parents and students indicating that their school and schools in their jurisdiction have improved or stayed the same the last three years.	Overall (required)	School	85.8	90.4	93.5	92.7	90.3	if set
		Authority	77.1	75.9	81.3	84.4	81.4	
		Province	73.9	76.8	76.3	77.0	79.4	
	Teacher (optional)	School	85.7	*	92.9	90.6	86.2	
		Authority	79.0	68.8	84.9	85.7	81.7	
		Province	73.1	75.5	74.5	75.6	78.2	
	Parent (optional)	School	80.0	92.0	95.2	93.3	94.4	
		Authority	80.0	80.2	81.2	87.1	81.8	
		Province	70.9	75.4	75.1	75.9	78.1	
	Student (optional)	School	91.8	88.9	92.3	94.0	90.1	
		Authority	72.3	78.7	77.7	80.5	80.8	
		Province	77.9	79.4	79.3	79.5	81.8	

Comment on Results

The annual *Schollie Survey* results reaffirm this high level of satisfaction. 94% of parents responded that they were satisfied that the school had a process in place for improving the quality of education it offers to students. In addition 96% of parents were satisfied with the overall quality of education that their child receives.

Graph of Overall School Results (optional)



Note: Data values have been suppressed where the number of respondents is less than 6. Suppression is marked with an asterisk (*).

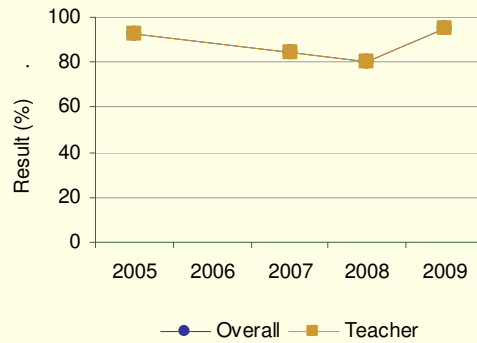
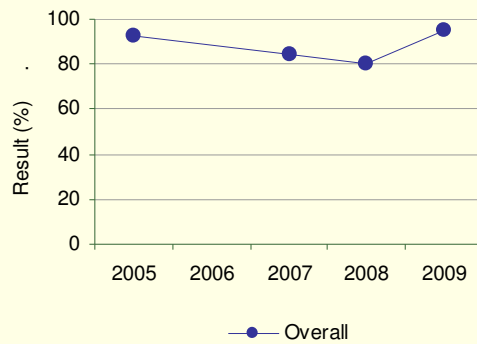
Outcome: The authority demonstrates leadership and continuous improvement. (continued)

Performance Measure		Results (in percentages)					Target	
		2005	2006	2007	2008	2009	2009	
The percentage of teachers reporting that in the past 3-5 years the professional development and in-servicing received from the school authority has been focused, systematic and contributed significantly to their ongoing professional growth.	Overall (required)	School	92.9	n/a	84.5	80.2	95.4	if set
		Authority	74.8	73.5	79.3	78.3	82.4	
		Province	76.5	78.2	78.8	80.4	81.5	
	Teacher (optional)	School	92.9	*	84.5	80.2	95.4	
		Authority	74.8	73.5	79.3	78.3	82.4	
		Province	76.5	78.2	78.8	80.4	81.5	

Comment on Results

The St. Joseph Staff were engaged in a well planned professional development initiative involving leadership team meetings coupled with grade level meetings. The discussion topics focused on inquiry based learning, 3 +1 Writing and Smart Board technology. The annual *Schollie Survey* reported that 97% of teachers were satisfied with their access to professional development activities.

Graph of Overall School Results (optional)



Note: Data values have been suppressed where the number of respondents is less than 6. Suppression is marked with an asterisk (*).